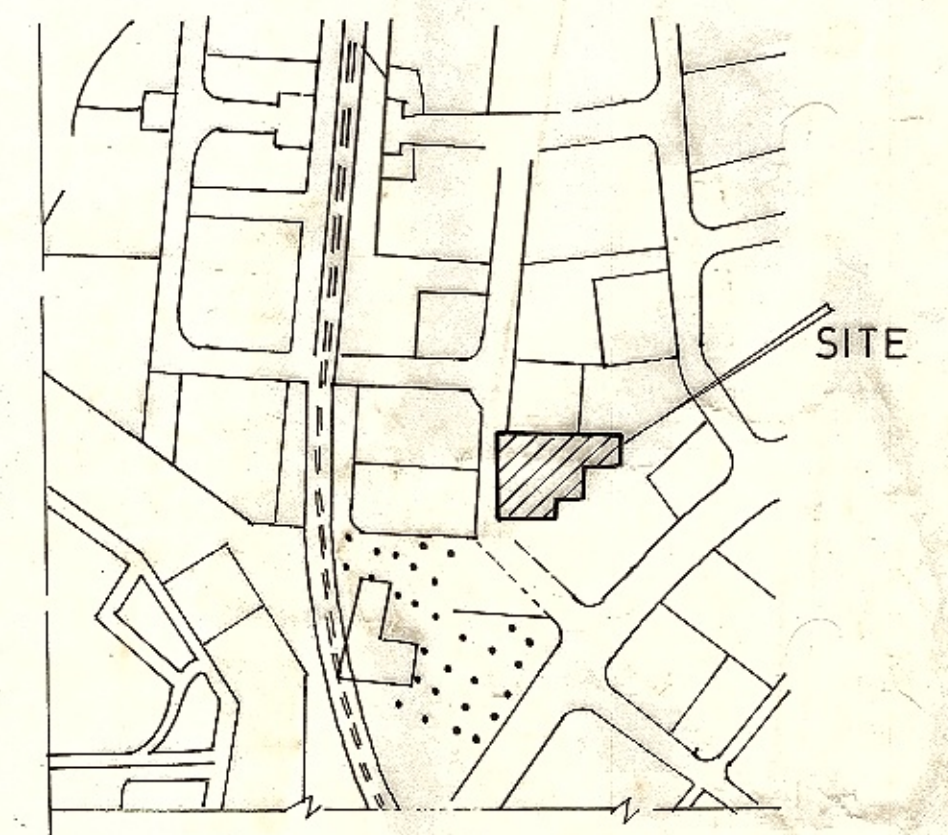
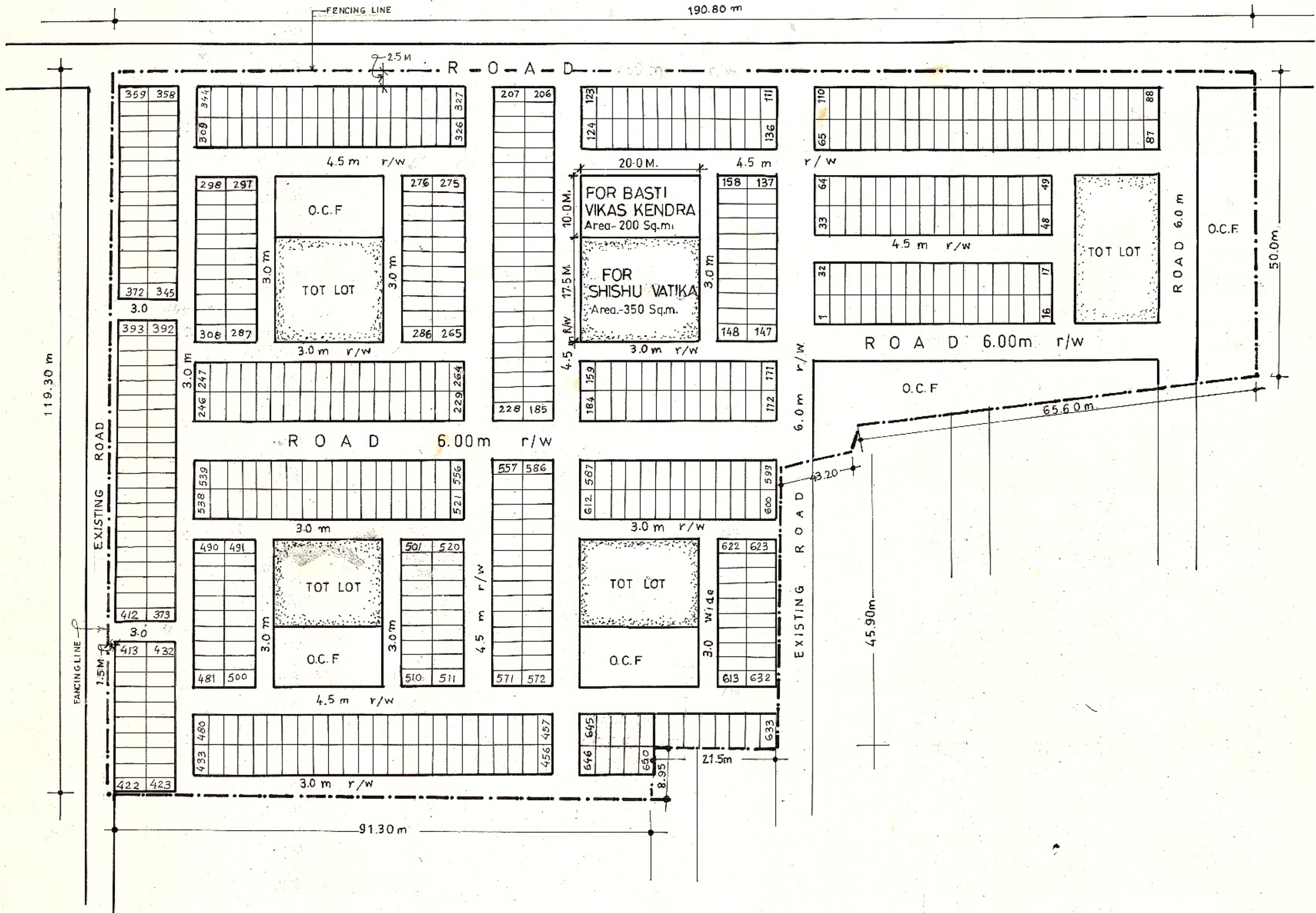


दि. वि. प्रा. द्वारका उपशहर परियोजना



LOCATION PLAN

NOTE :-
INCORPORATED BASTI VIKAS KENDRA & SHISHU VATIKA SITE ON O.C.F./TOT LOT PLOT APPROVED BY COMM.(PLG) IN FILE NO. F13(15)/2001/PLG/DWK DT. 9-1-2002 ON PAGE NO 4/N & DRAFT PLAN NO. 23/C.

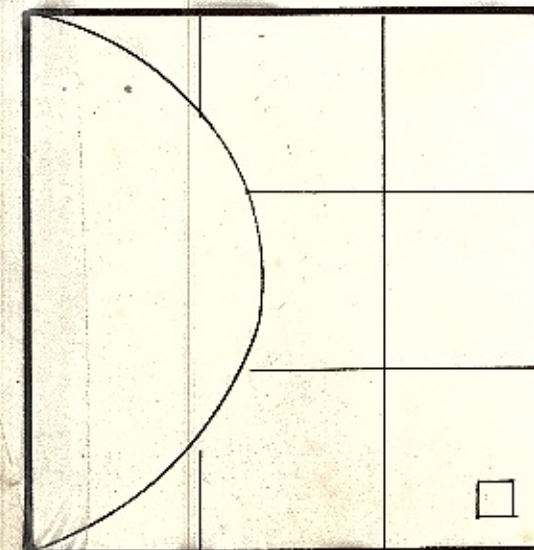
AREA STATEMENT

USE	AREA in sqm.	% age
TOTAL AREA OF THE POCKET A	17568.00	Sqm.
RESIDENTIAL	8125.00	46.25
O. C. F.	1850.00	10.53
TOT-LOT	1586.00	9.03
CIRCULATION	6007.00	34.19

No. OF PLOTS 650
PLOT SIZE 25m X 5.00m = 12.50 Sq.m.

NOTES
1. THIS DRG. IS BASED ON P.T SURVEY SUPPLIED BY J(D)S/DWARKA
2. MODIFIED DRAWING APPROVED BY COMM(PLG) VIDE ORDERS DATED 20.8.98. VIDE FILE NO. F4(15) 94/DWK/DDA. AT PAGE NO. 17/N.

LAYOUT PLAN OF TRANSIT CAMP (REVISED)



DWARKA SUB-CITY (PAIPANIKALAD)

VACANT POCKET-A (SECTOR -15)			DRG. NO. 00/TC/PKTA/SECT.15/DWK/98/R.1
SCALE 1:500			AUG. 1998
KAUR, S.P. PLG. ASSTT.	SHARMA S.P. PLG. ASSTT.	sd/-17.8.98. ML. CHABRA. ASSTT. DIR.	
sd/- DY. DIR.	sd/- DIR.	sd/- 19.8. O.S.D(PLG) CO.ORDN.	COMM.(PLG)
दिल्ली विकास प्राधिकरण			